



Information

Event Office
 Address: Rua Tenente Carrion, 7 - Vila Oliveira - Santa Maria (RS)
 CEP: 97020-690 - Brazil
 Phone Nr: (+5555) 3212-3348
 Homepages: <http://wmoc2014.org.br/en/>
 E-mail: cbo_bra@uol.com.br

Venue, approach

Event Centre is Hotel Pampas da Serra - Av. Dom Luiz Guanella, 1561 (RS-235) - São José - 95680-000 - Canela/RS - Brazil - between towns of Gramado and Canela, State of Rio Grande do Sul, southern of Brazil.

Competitions in the vicinities of Canela and São Francisco de Paula, maximum 41 km from the Event Centre. However, the Sprint Qualification will take place in Porto Alegre.

By plane: the nearest airport is Salgado Filho International Airport. It is 1h45min by car to the Event Centre in Canela. International flights usually enter Brazil through São Paulo or Rio de Janeiro.

By bus: Citral Bus Co. offers buses departing each 2 hours from Porto Alegre Central Bus Station (possible board at the Airport). It costs from R\$ 25,70 to R\$ 33,00.

Competitions

Sprint: the competition is composed of a qualification and a final race. The first 80 competitors of each class will qualify for A-final, the following 80 for B-final, and so on.

Long Distance: the competition consists of two qualifications and a final race. Based on the overall results (qualifying races), the first 80 competitors of each class will qualify for A-final, the next 80 for B-final, etc.

Classes

World Masters categories for all runners born in 1979 or earlier: W/M 35-, 40-, 45-, 50-, 55-, 60-, 65-, 70-, 75-, 80-, 85-, 90-.

Punching System

SPORTIdent punching system with SI-Card will be used. You can hire a SI-Card for 8 EUR in your entry form.

Open participation

Alongside WMOC'14 an open event (public races) will be offered in the same terrain to younger classes, but without prize giving: W/M 10-12 L/S, 14-16, 18-20 and 21 years old (L=long course, S=short course).

Embargoed areas

The embargoed areas are shown on the map. It is permitted to travel along public roads or stay in hotels located inside the embargoed area, but any attempt to survey or train in the indicated areas is forbidden.

Programme

Thursday, 30 Oct: Arrival. Training. Event Centre opens. (Porto Alegre/RS)

Saturday, 01 Nov: Opening Ceremony. Sprint Model Event. Cultural event. (Porto Alegre)

Sunday, 02 Nov: Sprint Qualification, (Porto Alegre). Moving to Canela.

Monday, 03 Nov: Sprint Final and Prize-giving Ceremony. (Canela)

Tuesday, 04 Nov: Rest day, Long Distance Model Event. (Canela)

Wednesday, 05 Nov: 1st Long Distance Qualification.

Thursday, 06 Nov: 2nd Long Distance Qualification.

Friday, 07 Nov: Rest day.

Saturday, 08 Nov: Long Distance Final Race, Closing/Prize-giving Ceremony.

Monday, 09 Nov: Departure.

Bulletin 1

On behalf of the Brazilian Orienteering Confederation (CBO) and the WMOC 2014 Organizing Committee

Event Director: Paulo Calisto Becker

IOF SEA: Øivind Holt (NOR)

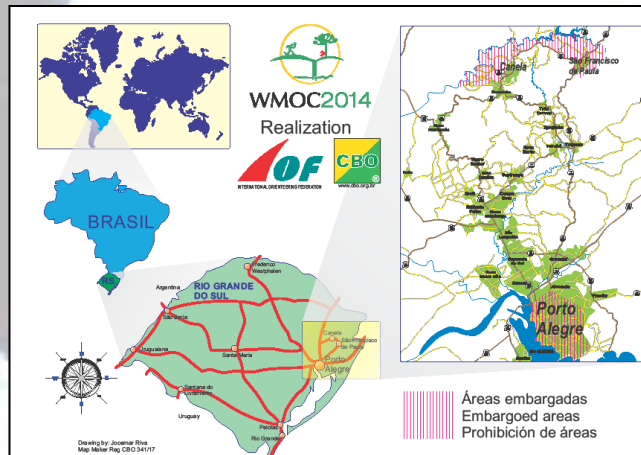
National Controller: J.A. Freitas Gomes



World Masters Orienteering Championships

Porto Alegre / Canela / São Francisco de Paula - RS - BRAZIL

01st to 08th November, 2014



Event Centre in Porto Alegre is Auditório Araújo Vianna - Av. Osvaldo Aranha, 685-Parque Farroupilha-Porto Alegre/RS - Brazil.
 Phone: (+5551) 3311-5156
recepcao@oiapresentaaraujoivianna.com.br



Entries

- 1) Registration will be possible from 01 Sep 2013 at <http://wmoc2014.org.br/en/>.
- 2) It is possible to enter for one competition (Sprint or Long Distance) only.
- 3) Entry is valid only after payment of the entry fee.

WMOC 2014 – Entry fees (EUR)				
Deadline	Regist.	Sprint	L. Dist.	Total
20 Feb 14	75	30	45	150
05 Jun 14	95	40	55	190
20 Sep 14	115	45	70	230

Open Event – Entry fees (EUR)		
Deadline	1 day	4 days
20 Feb 14	10	30
05 Jun 14	12	36
20 Sep 14	15	45

Cancellation	
Deadline	Refund
20 th Sept 2014	70%
12 th Oct 2014	50%
From 13 th Oct 2014	0%

Late entries
From 21 st Sep, 2014 – surcharge of 30 Eur, only for vacant places.

Changes	
Until 20 th Sept, 2014	Free
From 21 Sept to 13 Oct, 2014	10 Eur

Payment

- By debit or credit card in the on-line registration system at: <http://wmoc2014.org.br/en/>.
- Via bank transfer:
 - a) Remit payment order in favour to: Confederacao Brasileira de Orientacao.
 - b) Address: R. Tenente Carrion, 7 – Vila Oliveira – Santa Maria (RS) – Brazil – CEP 97020-690.
 - c) Account number (IBAN): BR2600000000001260000095591C1
 - d) Bank name and address: Banco do Brasil – Av. Rio Branco, 688 – Centro - Santa Maria – RS – Brazil CEP: 97010-422
 - e) Local office: Caxias do Sul Branch
 - f) Bank identification: SWIFT (BIC) code → BRASBRJPAE with cover through Banco do Brasil Frankfurt Branch (SWIFT BRASDEFF, CHIPS // CH008591).

Accommodation

A wide range of accommodation is offered near Event Centre. Canela is a tourism pearl town embedded in the mountains and you will find international hotels, apartment hotels, guest-houses, cottages, etc.

- On-line booking will be available from 1st of September, 2013.



WMOC2014

- Conditions of payment, changes and cancellations for each type of accommodation will be listed at the following homepage: <http://wmoc2014.org.br/en/>
After 1st of September, 2013, you can obtain information and assistance concerning accommodation at: www.felliniturismo.com.br, or email to: eventos@felliniturismo.com.br, or by phone: (+5551) 3216-6300.

Parking

There will be parking areas for private cars, vans and buses within walking distance from the assembly area. A parking fee may be charged.

Transport

The organiser will provide bus transport from the Event Centre to the different assembly areas. Booking through the homepage.

Terrain

The Sprint qualification will take place in Porto Alegre in an urban park situated at sea level. All the other terrains are placed at an altitude of 800-900 m. The forests consist mainly of planted pine, some eucalyptus mixed with native woodlands, open grazing lands, smaller rocky areas with cliffs and boulders, and passable watercourses.

Climate

Weather in November is typically warm and pleasant in the region, with temperatures ranging from 14° C to 24° C. Rainfall average in November is 128mm (10 to 14 days a month).

Maps

Sprint: ISSOM standard, scale 1:5000, contour interval 2,5m, maps made in 2012 and checked in 2013 and 2014.

Long Distance: ISOM standard, scale 1:10.000, contour interval 5m, new maps made in 2013 and checked in 2014.

Clothing

Full body coverage is mandatory at Long Distance competition and Final Sprint Course. Studded shoes are not allowed. Dobb spikes are permitted.

Ceremonies, culture

Open ceremony: on Sat (01 Nov) after Sprint Model Event.

Closing ceremony: on Sat (08 Nov) after Long Distance Final.

Official banquet: on Thursday 6 November at 8 pm after the 2nd Long Distance Qualification. Tickets (40 EUR / person) shall be bought beforehand.

For more information on cultural events visit the event website at <http://wmoc2014.org.br/en/> (notice that some tickets need to be pre-booked).

Visa, insurance

- Competitors coming from certain countries need a visa to visit Brazil. On-line form to submit visas to visit Brazil on: <https://scedv.serpro.gov.br>.

- Each competitor participates in the event at his/her own risk. Nevertheless, there will be a whole event insurance policy (life and accident) covering all participants.

Training

Training opportunities will be available from Thursday (30th, October) or earlier, on request.

We are very proud to host veteran Orienteers from all around the globe in PORTO ALEGRE, CANELA and SÃO FRANCISCO DE PAULA!

Welcome to Brazil !

WMOC 2014 Organising Committee

See also:

<http://www.youtube.com/user/wmoc2014>

<https://www.facebook.com/wmoc2014>

